

WorldMark Oceanside

1301 Carmelo Drive
Oceanside, CA 92054
Phone: (760) 721-0890
Fax: (760) 435-1310

Special Needs Unit Features

- Card key lock entry
- All entry doors have at least 33" of clearance
- All interior door widths 31"
- All doors have lever handles
- One two-bedroom and the three-bedroom units have roll-in showers
- 25½" roll-under lavatories
- 18" toilets
- Grab bars
- A portable bath bench with back support is available
- 24" high beds
- Accessible decks
- Roll-under kitchen sinks
- Dining room table knee clearance 24½"
- Minimum of 36" access on at least one bed side
- Front control stove/range
- Counter microwaves
- Visual fire, doorbell and phone alarms

Resort Accessible Features

- Accessible parking
- Lowered check-in counter
- TDD unit available
- Lift access for pool and spa
- Accessible routes to recreation and fitness center, pool, spa, children's pool, playground, tennis and basketball courts

WorldMark at Oceanside offers handicap parking, power lobby doors and a lowered section at the check-in counter for disabled access. All resort accommodations have elevator access, and facilities are located on level to gently sloping areas. The resort has accessible routes to the recreation area, game room and fitness center, as well as the outdoor facilities, including basketball and tennis courts, swimming pool, spa, children's pool and playground. All special needs units are equipped with visual fire, doorbell and phone alarms. The resort has one TDD unit available.

Special Needs Units

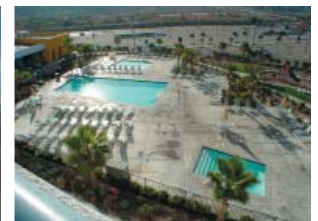
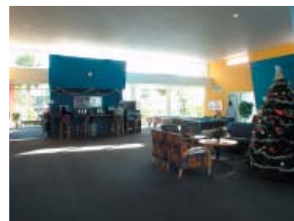
Two bedroom, two bathroom

Three bedroom, two bathroom

All special needs units have card key lock entry, lever door handles and level thresholds. All entry doors have at least 33" of clearance, and interior door widths of at least 31". Bathrooms are equipped with grab bars, 18" toilets, 25½" of knee clearance under lavatories and tub/showers with grab bars, fold down benches, hand held shower heads and shower curtains. (Except for one of the two-bedroom units, which has a 34"x58" roll-in shower; and the three-bedroom unit, which has a 33"x56" roll-in shower.) A portable bath bench with back support is also available. Bedrooms have at least 36" of clearance on one bed side. The kitchens all have sinks with knee clearance, front control appliances and counter microwaves. Living areas are open and the large decks have at least 32" access with thresholds of 1"-1½".

Though all of the standard unit bathrooms are large enough to accommodate most wheelchairs and living areas and kitchens are similar in all units, the two-, three- and three-bedroom penthouse units are the best alternatives to special needs units because they also have more spacious bedrooms.

Photos are from special needs two-bedroom unit



This guide was researched and compiled by WorldMark owners Larry and Rachelle Topliff. Their company, Accessible Solutions, helps businesses provide better access for all.