

WorldMark Bass Lake

53134 Road 432
Bass Lake, CA 93604
Phone: (559) 642-6780
Fax: (559) 642-6796

Special Needs Unit Features

- Chair-style stair lift provides access to both bedrooms and accessible bathroom located on second level of unit. Not recommended for guests with more than mild mobility impairments.
- Entry doors have 32" clearance
- 33" interior doorways
- Bedrooms have at least 36" access on one bed side
- Bed heights about 25"
- Dining tables have 24½" knee clearance
- 36"x 60" roll-in showers with fold down seats
- Grab bars
- Handheld showerhead
- Portable bath benches
- Roll-under lavatories have 26" knee clearance
- 17" toilets
- Front control oven/stove
- Compliance kit with TDD unit, visual fire, phone and door knock alarms available

Resort Accessible Features

- Accessible parking
- Card key locks
- Accessible routes to all facilities
- Lift for pool and spa access

WorldMark Bass Lake is located on level to gently sloping property and has accessible parking and accessible routes to all resort facilities. A lift is available for pool and spa access. Registration counter height is 42".

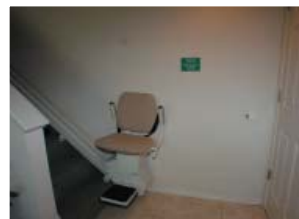
Special Needs Units

Two-bedroom, two-bathroom

Special needs units are not recommended for guests with more than mild mobility impairments because both bedrooms and the accessible bathroom are upstairs with access via chair-style stair lift only. All special needs units have card key lock entry, lever door handles, level thresholds and 32" entry clearance. All interior doorways have at least 33" of clearance. Special needs bathrooms are equipped with grab bars, 17" high toilets, 26" knee clearance under lavatories and 36"x 60" roll-in showers. Bedrooms have at least 36" clearance on one side. Kitchens have front control oven/stoves and 36" counters and sinks. Dining room tables have 24½" of knee clearance. Living rooms are spacious. The 8' x 8' decks have 30" access and 2½" thresholds.

No non-special needs units are recommended for mobility impaired guests because all units have two floors with both bedrooms and the accessible bathroom are located upstairs.

Photos are from special needs two-bedroom unit



This guide was researched and compiled by WorldMark owners Larry and Rachelle Topliff. Their company, Accessible Solutions, helps businesses provide better access for all.